

Music for Percussion

D.D. in the Mix

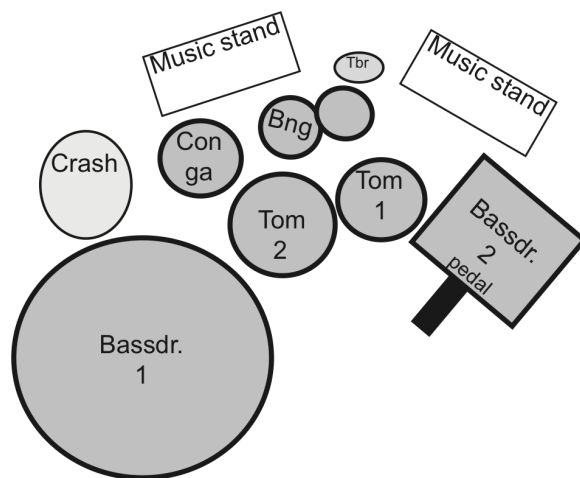
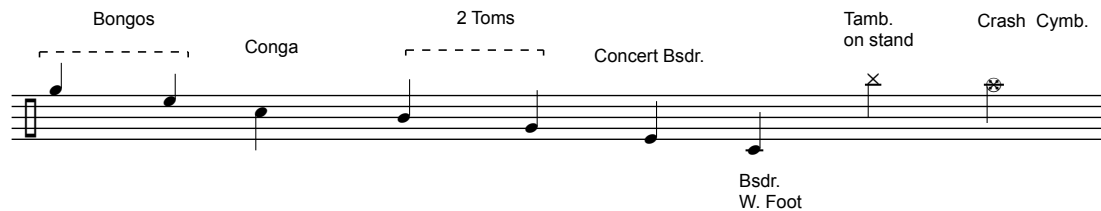
for solo percussion

Walter Mertens

dur. ca. 4'30

D.D. in the Mix

Legende



setup

bassdrum
bassdrum w. pedal
concerttoms 2
conga
bongos
tambourine (Tbr)
crash cymbal

sticks:

drumsticks |

D.D. in the Mix

Dedicated to Didi

Walter Mertens

$\text{♩} = \pm 112$

R L L R L Lunga

ff *fp* *ff*

p *ff*

(A) R R L L

ff *mf*

> >

(B) > >> > >>

mp *f* *mp*

D.D. in the Mix

Musical staff with notes and dynamics. Dynamics include *f* and *mp*. Accents (>) are present above several notes.

Musical staff with notes, dynamics, and a circled C. Dynamics include *mp* and *f*. Accents (>) are present above several notes. A circled C is located above the staff. Fingering L R L R L L is indicated above the notes.

Musical staff with notes and dynamics. Dynamics include *f*. Fingering R R L is indicated above the notes.

Musical staff with notes and dynamics. Dynamics include *f*. A double bar line with a slash is present.

Musical staff with notes, dynamics, and a circled D. Dynamics include *f*. A circled D is located above the staff.

Musical staff with notes and dynamics. Dynamics include *f*.

Musical staff with circled 'E'. The staff contains rhythmic notation with 'x' marks above notes, indicating a specific technique. The notation is organized into measures with stems and beams.

Musical staff with rhythmic notation, continuing the pattern from the previous staff. It features stems, beams, and 'x' marks above notes.

Musical staff with circled 'F' and 'R L R L R L R L R L R R L R R L R' notation. The staff contains rhythmic notation with 'x' marks above notes. The letters 'R' and 'L' are placed above the notes, indicating a specific technique or rhythm.

p

Musical staff with rhythmic notation, continuing the pattern from the previous staff. It features stems, beams, and 'x' marks above notes.

Musical staff with circled 'G' and dynamic markings. The staff contains rhythmic notation with 'x' marks above notes. Dynamic markings include *mf*, *f*, and *mf*. There are also accents (>>) above some notes.

mf *f* *mf*

Musical staff with dynamic markings and time signature changes. The staff contains rhythmic notation with 'x' marks above notes. Dynamic markings include *f* and *mf*. There are also accents (>>) above some notes. The time signature changes from 4/4 to 3/4 and back to 4/4.

f *mf* *f*

D.D. in the Mix

6

>> >> >> > >

ff

©

©

©

76

81

86